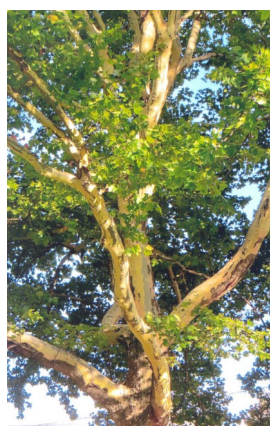
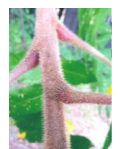


August “Refreshing”

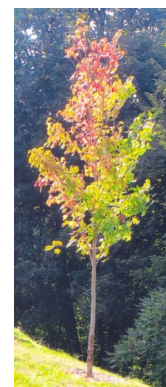
The word “refreshing” is not normally associated with the hot, humid month of August; however, it is applicable when describing the coolness of walking the paths under the canopy of the many shade trees at the Charles Baber Cemetery. No matter what time of day, and no matter where the sun is positioned in the sky, there is some specie of tree that is providing shade. Numerous paths offer shade to a walker and their dog or child. For instance, if taking an immediate right inside the main gate off of Market Street onto Trinity Ave., the path passes the yew trees and wanders down under tall eastern white pine and Japanese larch. The back loop in this section connects three separate forested paths –Trinity Ave., Mt. Laurel Ave., and Chapel Avenue. All the paths contain many shade trees of Norway spruce, Norway maple and white oak. If taking Chapel Ave., which runs above the four terraces, take a moment midway down the path to look to the right. There on the fourth terrace is a cluster of staghorn sumac. At this time of year, the soft velvety branches bear tall narrow “lollipop” shaped clusters of red flowers.



If a visitor enters the main gate and turns left onto Trinity Ave., the path flows through shaded lanes of London planetrees, chestnut oak, a red oak, a white ash, and many pin oaks. Look closely at the London planetrees by the Market St. wall. They have shed their camouflage colored outer bark, revealing a yellowish-green inner bark. This is good because it means the trees are healthy and growing. Pin oaks continue to shade Trinity as it meets Valley Rd. or as it diverts to Woodland Avenue. Valley Rd., which runs east to the lower level or west to 16th St., is lined with ‘sunset’ red maples, Norway maples, Norway spruce, 1 white oak, and a mock orange. Stop to admire the mock orange, a late bloomer, which is filled with clusters of tiny white flowers.



The lower level has two roads and two loops. Valley Road, after passing the carriage house, is lined with swamp white oak, homestead hybrid elm, and sweetgum. It branches off to the Maplewood Ave. loop which is also tree lined with mature sugar maples and Norway maples, plus 2 black walnut, 1 black locust, and box elders on the back end of the loop. A second loop, called Oak Road, holds the feathery leafed dawn redwoods. Oak Road meets Elm Ave. which has three gorgeous Siberian elm with their graceful long limbs reaching skyward. It also has mature and baby sugar maple, and baby hybrid elms. Then the walker can return to either entrance on ‘sunset’ red maple lined Mt. Laurel Ave. A few of the ‘sunset’ red maple, depending on the weather, may be changing their green leaf coloring to bright red and yellow.



Visitors and guests of all types can be found walking the paths with their dogs (some with two dogs) and/or their children. Couples may be walking hand in hand or sitting under a tree, and a bicyclist may be pedaling by. We do have the track team jogging through now because school starts the last week of August. And of course, with school starting, the children are walking through in the early morning and mid afternoon. We also have mourners, some of whom are frequent guests, while others may be driving in from out of state. And we have other visitors that just need a little respite from the day’s hectic schedule. No matter who visits or for what reason, the Baber Cemetery offers cool shade, a closeness to nature, and a quietness that refreshes the body and calms the busy mind.

